

## Anti-E2F1 antibody (58-93) (STJ500810)

STJ500810

### GENERAL INFORMATION

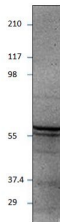
<b>Product Type</b>	Primary antibodies
<b>Short Description</b>	Rabbit polyclonal antibody anti-E2F1 (58-93) is suitable for use in ELISA and Western Blot research applications.
<b>Applications</b>	ELISA, WB
<b>Host/Source</b>	Rabbit
<b>Reactivity</b>	Human, Mouse, Rat

### PRODUCT PROPERTIES

<b>Clonality</b>	Polyclonal
<b>Clone ID</b>	
<b>Concentration</b>	0.65 µg/µl
<b>Conjugation</b>	Unconjugated
<b>Purification</b>	Affinity Purified
<b>Dilution Range</b>	WB: 1:1, 000 DB: 1:10, 000 ELISA: 1:10, 000 IP: 1:200
<b>Formulation</b>	
<b>Isotype</b>	IgG
<b>Storage Instruction</b>	Store at -20°C for long term storage. Avoid freeze-thaw cycles.

### TARGET INFORMATION

<b>Gene ID</b>	1869
<b>Gene Symbol</b>	E2F1
<b>Uniprot ID</b>	E2F1_HUMAN
<b>Immunogen</b>	Synthetic peptide corresponding to amino acids 58-93 of Human E2F1.
<b>Immunogen Region</b>	58-93
<b>Specificity</b>	
<b>Immunogen Sequence</b>	



Western blot with Anti-E2F1 Antibody (STJ500810) with peptide on at 1:500 dilution in buffer.

---

This product is suitable for in-vitro studies under the RESEARCH USE ONLY [RUO] licence. This product must not be used as for diagnostic or other medical purposes.  
St John's Laboratory Ltd, Knowledge Dock Business Centre, University Way, London, E16 2RD | Tel: 0208 223 3081