

Anti-DYRK2 antibody (550-601) (STJ500807)

STJ500807

GENERAL INFORMATION

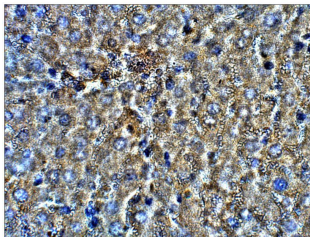
Product Type	Primary antibodies
Short Description	Rabbit polyclonal antibody anti-DYRK2 (550-601) is suitable for use in ELISA, Immunohistochemistry, Immunoprecipitation and Western Blot research applications.
Applications	ELISA, IHC, IP, WB
Host/Source	Rabbit
Reactivity	Human, Mouse, Rat

PRODUCT PROPERTIES

Clonality	Polyclonal
Clone ID	
Concentration	0.5 µg/µl
Conjugation	Unconjugated
Purification	Affinity Purified
Dilution Range	WB: 1:500 ELISA: 1:10, 000 IP: 1:150 IHC: 1:50-1:150
Formulation	
Isotype	IgG
Storage Instruction	Store at -20°C for long term storage. Avoid freeze-thaw cycles.

TARGET INFORMATION

Gene ID	8445
Gene Symbol	DYRK2
Uniprot ID	DYRK2_HUMAN
Immunogen	Synthetic peptide taken within amino acid region 550-601 on human Dual specificity tyrosine-phosphorylation-regulated kinase 2.
Immunogen Region	550-601
Specificity	
Immunogen Sequence	



Immunohistochemistry with Anti-DYRK2 Antibody (STJ500807) at 1:50 dilution in Buffer. DAB (brown) staining and Haematoxylin QS (blue) counterstain. 40X magnification. FFPE section.