

Anti-DYRK1A antibody (300-350) (STJ500804)

STJ500804

GENERAL INFORMATION

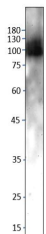
Product Type	Primary antibodies
Short Description	Rabbit polyclonal antibody anti-DYRK1A (300-350) is suitable for use in ELISA, Immunohistochemistry, Immunoprecipitation and Western Blot research applications.
Applications	ELISA, IHC, IP, WB
Host/Source	Rabbit
Reactivity	Human, Monkey, Mouse, Rat

PRODUCT PROPERTIES

Clonality	Polyclonal
Clone ID	
Concentration	0.5 µg/µl
Conjugation	Unconjugated
Purification	Affinity Purified
Dilution Range	WB: 1:500 ELISA: 1:10, 000 IP: 1:150 IHC: 1:50-1:150
Formulation	
Isotype	IgG
Storage Instruction	Store at -20°C for long term storage. Avoid freeze-thaw cycles.

TARGET INFORMATION

Gene ID	1859
Gene Symbol	DYRK1A
Uniprot ID	DYR1A_HUMAN
Immunogen	Synthetic peptide taken within amino acid region 300-350 on human Dual specificity tyrosine-phosphorylation-regulated kinase 1A.
Immunogen Region	300-350
Specificity	
Immunogen Sequence	



Western blot with Anti-DYRK1A Antibody (STJ500804) of rat hippocampus at 1:250 dilution in buffer.