

Anti-DRP1 antibody (450-490) (STJ500792)

STJ500792

GENERAL INFORMATION

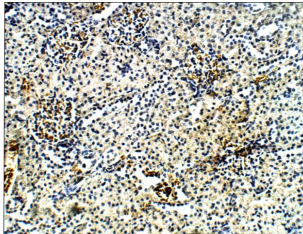
Product Type	Primary antibodies
Short Description	Rabbit polyclonal antibody anti-DRP1 (450-490) is suitable for use in ELISA, Immunocytochemistry, Immunofluorescence, Immunohistochemistry, Immunoprecipitation and Western Blot research applications.
Applications	ELISA, ICC, IF, IHC, IP, WB
Host/Source	Rabbit
Reactivity	D.melanogaster, Human, Mouse, Rat

PRODUCT PROPERTIES

Clonality	Polyclonal
Clone ID	
Concentration	0.55-0.68 µg/µl
Conjugation	Unconjugated
Purification	Affinity Purified
Dilution Range	WB: 1:450 ELISA: 1:10, 000 IP: 1:200 IHC: 1:100 ICC: 1:100 IF: 1:100
Formulation	
Isotype	IgG
Storage Instruction	Store at -20°C for long term storage. Avoid freeze-thaw cycles.

TARGET INFORMATION

Gene ID	74006
Gene Symbol	Dnm1l
Uniprot ID	DNM1L_MOUSE
Immunogen	Synthetic peptide within 450-490 on human DRP1 protein.
Immunogen Region	450-490
Specificity	
Immunogen Sequence	



Immunohistochemistry with Anti-DRP1 Antibody (STJ500792) at 1:100 dilution in Buffer. DAB (brown) staining and Haematoxylin QS (blue) counterstain. 20X magnification on Leica DM4000. FFPE section.

This product is suitable for in-vitro studies under the RESEARCH USE ONLY [RUO] licence. This product must not be used as for diagnostic or other medical purposes.
St John's Laboratory Ltd, Knowledge Dock Business Centre, University Way, London, E16 2RD | Tel: 0208 223 3081