

## Anti-DRAXIN antibody (300-330) (STJ500789)

STJ500789

### GENERAL INFORMATION

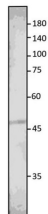
|                          |  |
|--------------------------|--|
| <b>Product Type</b>      | Primary antibodies   |
| <b>Short Description</b> | Rabbit polyclonal antibody anti-DRAXIN (300-330) is suitable for use in ELISA, Immunocytochemistry and Western Blot research applications. |
| <b>Applications</b>      | ELISA, ICC, WB   |
| <b>Host/Source</b>       | Rabbit   |
| <b>Reactivity</b>        | Bovine, Chicken, Human, Monkey, Mouse, Rat   |

### PRODUCT PROPERTIES

|                            |  |
|----------------------------|--|
| <b>Clonality</b>           | Polyclonal   |
| <b>Clone ID</b>            |  |
| <b>Concentration</b>       | 0.64 µg/µl   |
| <b>Conjugation</b>         | Unconjugated   |
| <b>Purification</b>        | Affinity Purified  |
| <b>Dilution Range</b>      | WB: 1:500-1:1,000<br>DB: 1:20,000-1:50,000<br>ELISA: 1:20,000-1:50,000<br>ICC: 1:100 |
| <b>Formulation</b>         |  |
| <b>Isotype</b>             | IgG  |
| <b>Storage Instruction</b> | Store at -20°C for long term storage. Avoid freeze-thaw cycles.                      |

### TARGET INFORMATION

|                           |  |
|---------------------------|--|
| <b>Gene ID</b>            | 374946   |
| <b>Gene Symbol</b>        | DRAXIN   |
| <b>Uniprot ID</b>         | DRAXL_HUMAN  |
| <b>Immunogen</b>          | Synthetic peptide taken within amino acid region 300-330 on C terminal region of Human Draxin protein. Region: NNKCFDDCMC VEGLR CYAKF HRNRRVTRRK |
| <b>Immunogen Region</b>   | 300-330  |
| <b>Specificity</b>        |  |
| <b>Immunogen Sequence</b> |  |



Western blot with Anti-DRAXIN Antibody (STJ500789) of rat frontal cortex at 1:250 dilution in buffer.