

Anti-PRKDC antibody (4000-4128) (STJ500781)

STJ500781

GENERAL INFORMATION

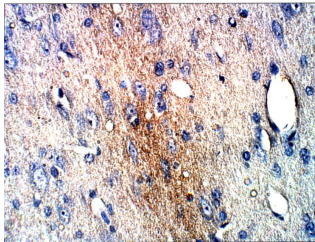
Product Type	Primary antibodies
Short Description	Chicken polyclonal antibody anti-PRKDC (4000-4128) is suitable for use in ELISA, Immunohistochemistry, Immunoprecipitation and Western Blot research applications.
Applications	ELISA, IHC, IP, WB
Host/Source	Chicken
Reactivity	Human, Mouse, Rat

PRODUCT PROPERTIES

Clonality	Polyclonal
Clone ID	
Concentration	0.5 µg/µl
Conjugation	Unconjugated
Purification	Affinity Purified
Dilution Range	WB: 1:500 ELISA: 1:10, 000 IP: 1:200 IHC: 1:50-1:150
Formulation	
Isotype	IgY
Storage Instruction	Store at -20°C for long term storage. Avoid freeze-thaw cycles.

TARGET INFORMATION

Gene ID	5591
Gene Symbol	PRKDC
Uniprot ID	PRKDC_HUMAN
Immunogen	Synthetic peptide taken within amino acid region 4000-4128 of human DNP1 protein.
Immunogen Region	4000-4128
Specificity	
Immunogen Sequence	



Immunohistochemistry with Anti-PRKDC Antibody (STJ500781) at 1:50 dilution in Buffer. DAB (brown) staining and Haematoxylin QS (blue) counterstain. 40X magnification. FFPE section.