

Anti-DEK antibody (324-373) (STJ500750)

STJ500750

GENERAL INFORMATION

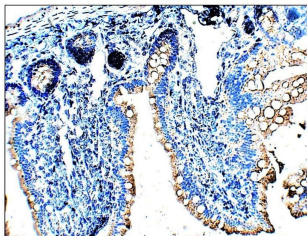
Product Type	Primary antibodies
Short Description	Rabbit polyclonal antibody anti-DEK (324-373) is suitable for use in ELISA, Immunohistochemistry, Immunoprecipitation and Western Blot research applications.
Applications	ELISA, IHC, IP, WB
Host/Source	Rabbit
Reactivity	Bovine, Cat, Human, Monkey, Mouse, Rat

PRODUCT PROPERTIES

Clonality	Polyclonal
Clone ID	
Concentration	0.65 µg/µl
Conjugation	Unconjugated
Purification	Affinity Purified
Dilution Range	WB: 1:500-1:750 DB: 1:10, 000 ELISA: 1:10, 000 IP: 1:200 IHC: 1:50-1:150
Formulation	
Isotype	IgG
Storage	Store at -20°C for long term storage. Avoid freeze-thaw cycles.
Instruction	

TARGET INFORMATION

Gene ID	7913
Gene Symbol	DEK
Uniprot ID	DEK_HUMAN
Immunogen	Synthetic peptide taken within residues corresponding to a region within amino acids 324-373 of human DEK.
Immunogen Region	324-373
Specificity	
Immunogen Sequence	



Immunohistochemistry of mouse tissue with Anti-DEK primary antibody (STJ500750) at 1:50 dilution in Buffer. Section was treated with DAB and Haematoxylin stain. Magnification is at 20x.

This product is suitable for in-vitro studies under the RESEARCH USE ONLY [RUO] licence. This product must not be used as for diagnostic or other medical purposes.
St John's Laboratory Ltd, Knowledge Dock Business Centre, University Way, London, E16 2RD | Tel: 0208 223 3081