

Anti-DCC antibody (1330-1380) (STJ500738)

STJ500738

GENERAL INFORMATION

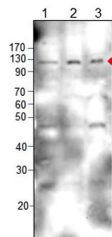
Product Type	Primary antibodies
Short Description	Rabbit polyclonal antibody anti-DCC (1330-1380) is suitable for use in ELISA and Western Blot research applications.
Applications	ELISA, WB
Host/Source	Rabbit
Reactivity	Human, Mouse, Rat

PRODUCT PROPERTIES

Clonality	Polyclonal
Clone ID	
Concentration	0.5- .70 µg/µl
Conjugation	Unconjugated
Purification	Affinity Purified
Dilution Range	WB: 1:500 DB: 1:10, 000 ELISA: 1:10, 000 IP: 1:200
Formulation	
Isotype	IgG
Storage Instruction	Store at -20°C for long term storage. Avoid freeze-thaw cycles.

TARGET INFORMATION

Gene ID	1630
Gene Symbol	DCC
Uniprot ID	DCC_HUMAN
Immunogen	Synthetic peptide taken within amino acid region 1330-1380 on rat DCC protein.
Immunogen Region	1330-1380
Specificity	
Immunogen Sequence	



Western blot with Anti-DCC Antibody (STJ500738). 1) peptide. 2) SKNMC and 3) RA treated SHSYSY cells at 1:500 dilution in buffer.

This product is suitable for in-vitro studies under the RESEARCH USE ONLY [RUO] licence. This product must not be used as for diagnostic or other medical purposes.
St John's Laboratory Ltd, Knowledge Dock Business Centre, University Way, London, E16 2RD | Tel: 0208 223 3081