

## Anti-Dopamine D5 Receptor antibody (428-478) (STJ500720)

STJ500720

### GENERAL INFORMATION

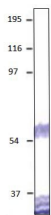
<b>Product Type</b>	Primary antibodies
<b>Short Description</b>	Rabbit polyclonal antibody anti-Dopamine D5 Receptor (428-478) is suitable for use in ELISA and Western Blot research applications.
<b>Applications</b>	ELISA, WB
<b>Host/Source</b>	Rabbit
<b>Reactivity</b>	Mouse, Rat

### PRODUCT PROPERTIES

<b>Clonality</b>	Polyclonal
<b>Clone ID</b>	
<b>Concentration</b>	0.5-1.5 µg/µl
<b>Conjugation</b>	Unconjugated
<b>Purification</b>	Affinity Purified
<b>Dilution Range</b>	WB: 1:1, 000-1:1, 5000 DB: 1:50, 000 ELISA: 1:50, 000 IP: 1:200
<b>Formulation</b>	
<b>Isotype</b>	IgG
<b>Storage Instruction</b>	Store at -20°C for long term storage. Avoid freeze-thaw cycles.

### TARGET INFORMATION

<b>Gene ID</b>	13492
<b>Gene Symbol</b>	Drd5
<b>Uniprot ID</b>	DRD5_MOUSE
<b>Immunogen</b>	Synthetic peptide taken within amino acid region 428-478 on mouse Dopamine Receptor D5 protein.
<b>Immunogen Region</b>	428-478
<b>Specificity</b>	
<b>Immunogen Sequence</b>	



Western blot with Anti-Dopamine D5 Receptor Antibody (STJ500720) with peptide on at 1:750 dilution in buffer.