

## Anti-Dopamine Receptor D4 antibody (STJ500717)

STJ500717

### GENERAL INFORMATION

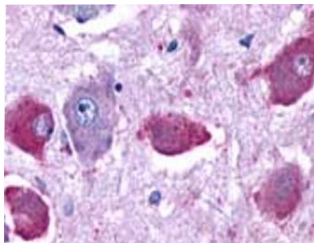
<b>Product Type</b>	Primary antibodies
<b>Short Description</b>	Rabbit polyclonal antibody anti-Dopamine Receptor D4 is suitable for use in Confocal Microscopy, ELISA, Immunocytochemistry, Immunofluorescence, Immunohistochemistry and Western Blot research applications.
<b>Applications</b>	CM, ELISA, ICC, IF, IHC, WB
<b>Host/Source</b>	Rabbit
<b>Reactivity</b>	Human, Mouse, Rat

### PRODUCT PROPERTIES

<b>Clonality</b>	Polyclonal
<b>Clone ID</b>	
<b>Concentration</b>	0.5-1.5 µg/µl
<b>Conjugation</b>	Unconjugated
<b>Purification</b>	Affinity Purified
<b>Dilution Range</b>	WB: 1:1, 000-1:1, 5000 DB: 1:50, 000 ELISA: 1:50, 000 IP: 1:200 IHC: 1:250 ICC: 1:250 IF: 1:250 CFM: 1:250
<b>Formulation</b>	
<b>Isotype</b>	IgG
<b>Storage</b>	Store at -20°C for long term storage. Avoid freeze-thaw cycles.
<b>Instruction</b>	

### TARGET INFORMATION

<b>Gene ID</b>	<a href="#">13491</a>
<b>Gene Symbol</b>	<a href="#">Drd4</a>
<b>Uniprot ID</b>	<a href="#">DRD4_MOUSE</a>
<b>Immunogen</b>	Synthetic peptide corresponding to unique sequence on Dopamine Receptor D4 protein.
<b>Immunogen Region</b>	
<b>Specificity</b>	
<b>Immunogen Sequence</b>	



Immunohistochemistry with Anti-Dopamine Receptor D4 Antibody (STJ500717) of Rat brain at 1:250 dilution in buffer.