

Anti-Dopamine D2 Receptor antibody (150-200) (STJ500708)

STJ500708

GENERAL INFORMATION

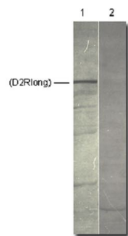
Product Type	Primary antibodies
Short Description	Rabbit polyclonal antibody anti-Dopamine D2 Receptor (150-200) is suitable for use in Confocal Microscopy, ELISA, Immunocytochemistry, Immunofluorescence, Immunohistochemistry, Immunoprecipitation and Western Blot research applications.
Applications	CM, ELISA, ICC, IF, IHC, IP, WB
Host/Source	Rabbit
Reactivity	Mouse, Rat

PRODUCT PROPERTIES

Clonality	Polyclonal
Clone ID	
Concentration	0.55µg/µl
Conjugation	Unconjugated
Purification	Affinity Purified
Dilution Range	WB: 1:1, 000-1:1, 5000 ELISA: 1:50, 000 IP: 1:200 IHC: 1:200 ICC: 1:200 IF: 1:200
Formulation	
Isotype	IgG
Storage Instruction	Store at -20°C for long term storage. Avoid freeze-thaw cycles.

TARGET INFORMATION

Gene ID	
Gene Symbol	
Uniprot ID	
Immunogen	Synthetic peptide taken within amino acid region 150-200 on rat Dopamine Receptor D2 protein.
Immunogen Region	150-200
Specificity	
Immunogen Sequence	



Western blot with Anti-Dopamine D2 Receptor Antibody (STJ500708) with peptide (lane 1) and cerebellar membranes (lane 2) at 1:500 dilution in buffer.