

Anti-Dopamine Receptor D1 antibody (250-300) (STJ500695)

STJ500695

GENERAL INFORMATION

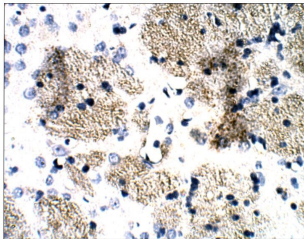
Product Type	Primary antibodies
Short Description	Rabbit polyclonal antibody anti-Dopamine Receptor D1 (250-300) is suitable for use in Confocal Microscopy, ELISA, Immunocytochemistry, Immunofluorescence, Immunohistochemistry and Western Blot research applications.
Applications	CM, ELISA, ICC, IF, IHC, WB
Host/Source	Rabbit
Reactivity	Mouse, Rat

PRODUCT PROPERTIES

Clonality	Polyclonal
Clone ID	
Concentration	0.50-1.20 µg/µl
Conjugation	Unconjugated
Purification	Affinity Purified
Dilution Range	WB: 1:2, 500-1:5, 000 DB: 1:10, 000 ELISA: 1:10, 000 IP: 1:200 IHC: 1:200 ICC: 1:200 IF: 1:200 CFM: 1:200
Formulation	
Isotype	IgG
Storage	Store at -20°C for long term storage. Avoid freeze-thaw cycles.
Instruction	

TARGET INFORMATION

Gene ID	NA
Gene Symbol	Drd1
Uniprot ID	DRD1_RAT
Immunogen	Synthetic peptide taken within amino acid region 250-300 on mouse D (1A) dopamine receptor.
Immunogen Region	250-300
Specificity	
Immunogen Sequence	



Immunohistochemistry of rat brain with Anti-Dopamine Receptor D1 primary antibody (STJ500695) at 1:100 dilution in Buffer. Section was treated with DAB and Haematoxylin stain. Magnification is at 40X.

This product is suitable for in-vitro studies under the RESEARCH USE ONLY [RUO] licence. This product must not be used as for diagnostic or other medical purposes.
St John's Laboratory Ltd, Knowledge Dock Business Centre, University Way, London, E16 2RD | Tel: 0208 223 3081