

Anti-CXCR1 antibody (N-Term) (STJ500639)

STJ500639

GENERAL INFORMATION

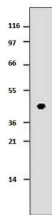
Product Type	Primary antibodies
Short Description	Rabbit polyclonal antibody anti-CXCR1 (N-Term) is suitable for use in ELISA, Immunoprecipitation and Western Blot research applications.
Applications	ELISA, IP, WB
Host/Source	Rabbit
Reactivity	Human

PRODUCT PROPERTIES

Clonality	Polyclonal
Clone ID	
Concentration	0.50 µg/µl
Conjugation	Unconjugated
Purification	Affinity Purified
Dilution Range	WB: 1:500 DB: 1:10, 000 ELISA: 1:10, 000 IP: 1:250 IHC: 1:100-1:1000
Formulation	
Isotype	IgG
Storage Instruction	Store at -20°C for long term storage. Avoid freeze-thaw cycles.

TARGET INFORMATION

Gene ID	3577
Gene Symbol	CXCR1
Uniprot ID	CXCR1_HUMAN
Immunogen	Synthetic peptide derived from the N terminus of Human CXCR1 protein.
Immunogen Region	N-Term
Specificity	
Immunogen Sequence	



Western blot with Anti-CXCR1 Antibody (STJ500639) with peptide on at 1:500 dilution in buffer.