

Anti-CX3CL1 antibody (350-395) (STJ500636)

STJ500636

GENERAL INFORMATION

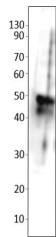
Product Type	Primary antibodies
Short Description	Rabbit polyclonal antibody anti-CX3CL1 (350-395) is suitable for use in ELISA, Immunohistochemistry, Immunoprecipitation and Western Blot research applications.
Applications	ELISA, IHC, IP, WB
Host/Source	Rabbit
Reactivity	Human, Monkey, Mouse, Rat

PRODUCT PROPERTIES

Clonality	Polyclonal
Clone ID	
Concentration	0.5 µg/µl
Conjugation	Unconjugated
Purification	Affinity Purified
Dilution Range	WB: 1:500 ELISA: 1:10, 000 IP: 1:150 IHC: 1:50-1:100
Formulation	
Isotype	IgG
Storage Instruction	Store at -20°C for long term storage. Avoid freeze-thaw cycles.

TARGET INFORMATION

Gene ID	20312
Gene Symbol	Cx3cl1
Uniprot ID	X3CL1_MOUSE
Immunogen	Synthetic peptide taken within amino acid region 350-395 on mouse Fractalkine protein.
Immunogen Region	350-395
Specificity	
Immunogen Sequence	



Western blot with Anti-CX3CL1 Antibody (STJ500636) of rat cerebellum at 1:500 dilution in buffer.