

Anti-CTLA4 antibody (150-200) (STJ500621)

STJ500621

GENERAL INFORMATION

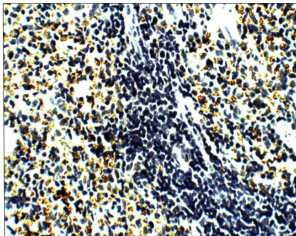
Product Type	Primary antibodies
Short Description	Rabbit polyclonal antibody anti-CTLA4 (150-200) is suitable for use in ELISA, Immunocytochemistry, Immunofluorescence, Immunohistochemistry, Immunoprecipitation and Western Blot research applications.
Applications	ELISA, ICC, IF, IHC, IP, WB
Host/Source	Rabbit
Reactivity	Human, Mouse, Rat

PRODUCT PROPERTIES

Clonality	Polyclonal
Clone ID	
Concentration	0.7 µg/µl
Conjugation	Unconjugated
Purification	Affinity Purified
Dilution Range	WB: 1:500 ELISA: 1:10, 000 IP: 1:200 IHC: 1:100 ICC: 1:100 IF: 1:100
Formulation	
Isotype	IgG
Storage Instruction	Store at -20°C for long term storage. Avoid freeze-thaw cycles.

TARGET INFORMATION

Gene ID	1493
Gene Symbol	CTLA4
Uniprot ID	CTLA4_HUMAN
Immunogen	Synthetic peptide taken within amino acid region 150-200 on human CTLA4 protein.
Immunogen Region	150-200
Specificity	
Immunogen Sequence	



Immunohistochemistry of rat spleen with Anti-CTLA4 primary antibody (STJ500621) at 1:100 dilution in Buffer. Section was treated with DAB and Haematoxylin stain. Magnification is at 40X.