

## Anti-DPYSL2 antibody (60-115) (STJ500612)

STJ500612

### GENERAL INFORMATION

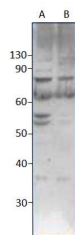
<b>Product Type</b>	Primary antibodies
<b>Short Description</b>	Rabbit polyclonal antibody anti-DPYSL2 (60-115) is suitable for use in ELISA and Western Blot research applications.
<b>Applications</b>	ELISA, WB
<b>Host/Source</b>	Rabbit
<b>Reactivity</b>	Human, Mouse, Rat

### PRODUCT PROPERTIES

<b>Clonality</b>	Polyclonal
<b>Clone ID</b>	
<b>Concentration</b>	0.57 µg/µl
<b>Conjugation</b>	Unconjugated
<b>Purification</b>	Affinity Purified
<b>Dilution</b>	WB: 1:500
<b>Range</b>	DB: 1:10, 000 ELISA: 1:10, 000
<b>Formulation</b>	
<b>Isotype</b>	IgG
<b>Storage</b>	Store at -20°C for long term storage. Avoid freeze-thaw cycles.
<b>Instruction</b>	

### TARGET INFORMATION

<b>Gene ID</b>	1808
<b>Gene Symbol</b>	DPYSL2
<b>Uniprot ID</b>	DPYL2_HUMAN
<b>Immunogen</b>	Synthetic peptide taken from within the region corresponding to AA 60-115 of the CRMP2 protein. The 26mer peptide was conserved in several other species. The selected peptide was post-synthetically modified to achieve highest antigenicity before coup
<b>Immunogen Region</b>	60-115
<b>Specificity</b>	
<b>Immunogen Sequence</b>	



Western blot with Anti-DPYSL2 Antibody (STJ500612) with peptide on Jurkat cell at dilution in buffer. A) Jurkat cells. B) CRMP2 Positive Control (PC-CRMP2). The CRMP2 antibody labels a band of 64 kDa in CRMP2 protein samples. In Jurkat cells, the antibody also labels a smaller band (MW 54-56 kDa), the identity of this protein is not known but may represent a splice variant or proteolysis product of CRMP2 protein.

This product is suitable for in-vitro studies under the RESEARCH USE ONLY [RUO] licence. This product must not be used as for diagnostic or other medical purposes.  
St John's Laboratory Ltd, Knowledge Dock Business Centre, University Way, London, E16 2RD | Tel: 0208 223 3081