

Anti-CAPRN1 antibody (200-250) (STJ500606)

STJ500606

GENERAL INFORMATION

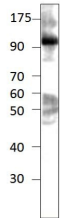
Product Type	Primary antibodies
Short Description	Rabbit polyclonal antibody anti-CAPRN1 (200-250) is suitable for use in ELISA, Immunoprecipitation and Western Blot research applications.
Applications	ELISA, IP, WB
Host/Source	Rabbit
Reactivity	Human, Monkey, Mouse, Pig, Rat

PRODUCT PROPERTIES

Clonality	Polyclonal
Clone ID	
Concentration	0.54 µg/µl
Conjugation	Unconjugated
Purification	Affinity Purified
Dilution Range	WB: 1:500 DB: 1:10, 000 ELISA: 1:10, 000
Formulation	
Isotype	IgG
Storage Instruction	Store at -20°C for long term storage. Avoid freeze-thaw cycles.

TARGET INFORMATION

Gene ID	4076
Gene Symbol	CAPRN1
Uniprot ID	CAPR1_HUMAN
Immunogen	Synthetic peptide taken within amino acid region 200-250 on human Caprin 1 protein. Epitope CPRN1-101AP was raised against a region that lies on the surface of the protein in native or in partially denatured confirmation.
Immunogen Region	200-250
Specificity	
Immunogen Sequence	



Western blot with Anti-CAPRN1 Antibody (STJ500606) with peptide on at 1:500 dilution in buffer.