

Anti-CNIH1 antibody (90-120) (STJ500603)

STJ500603

GENERAL INFORMATION

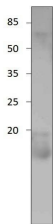
Product Type	Primary antibodies
Short Description	Rabbit polyclonal antibody anti-CNIH1 (90-120) is suitable for use in ELISA, Immunoprecipitation and Western Blot research applications.
Applications	ELISA, IP, WB
Host/Source	Rabbit
Reactivity	Human, Mouse, Rat

PRODUCT PROPERTIES

Clonality	Polyclonal
Clone ID	
Concentration	0.51-0.62 µg/µl
Conjugation	Unconjugated
Purification	Affinity Purified
Dilution Range	WB: 1:500 DB: 1:10, 000 ELISA: 1:10, 000 IP: 1:200
Formulation	
Isotype	IgG
Storage Instruction	Store at -20°C for long term storage. Avoid freeze-thaw cycles.

TARGET INFORMATION

Gene ID	10175
Gene Symbol	CNIH1
Uniprot ID	CNIH1_HUMAN
Immunogen	Synthetic peptide taken within amino acid region 90-120 on human Cornichon protein.
Immunogen Region	90-120
Specificity	
Immunogen Sequence	



Western blot with Anti-CNIH1 Antibody (STJ500603) and peptide on rat at 1:250 dilution in buffer for 1 hour at room temperature, from a 14% SDS gel.

This product is suitable for in-vitro studies under the RESEARCH USE ONLY [RUO] licence. This product must not be used as for diagnostic or other medical purposes.
St John's Laboratory Ltd, Knowledge Dock Business Centre, University Way, London, E16 2RD | Tel: 0208 223 3081