

## Anti-CALCA antibody (30-80) (STJ500585)

STJ500585

### GENERAL INFORMATION

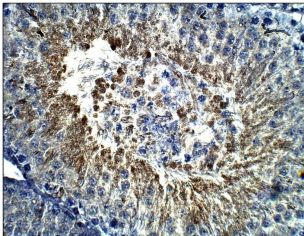
<b>Product Type</b>	Primary antibodies
<b>Short Description</b>	Rabbit polyclonal antibody anti-CALCA (30-80) is suitable for use in ELISA, Immunocytochemistry, Immunofluorescence, Immunohistochemistry, Immunoprecipitation and Western Blot research applications.
<b>Applications</b>	ELISA, ICC, IF, IHC, IP, WB
<b>Host/Source</b>	Rabbit
<b>Reactivity</b>	Human, Mouse, Pig, Rat

### PRODUCT PROPERTIES

<b>Clonality</b>	Polyclonal
<b>Clone ID</b>	
<b>Concentration</b>	0.55-0.75 µg/µl
<b>Conjugation</b>	Unconjugated
<b>Purification</b>	Affinity Purified
<b>Dilution</b>	WB: 1:500
<b>Range</b>	ELISA: 1:10, 000 IP: 1:150 IHC: 1:100 ICC: 1:100 IF: 1:100
<b>Formulation</b>	
<b>Isotype</b>	IgG
<b>Storage</b>	Store at -20°C for long term storage. Avoid freeze-thaw cycles.
<b>Instruction</b>	

### TARGET INFORMATION

<b>Gene ID</b>	796
<b>Gene Symbol</b>	CALCA
<b>Uniprot ID</b>	CALC_HUMAN
<b>Immunogen</b>	Synthetic peptide taken within amino acid region 30-80 on human Calcitonin protein.
<b>Immunogen Region</b>	30-80
<b>Specificity</b>	
<b>Immunogen Sequence</b>	



Immunohistochemistry of rat tissue with Anti-CALCA primary antibody (STJ500585) at 1:50 dilution in Buffer. Section was treated with DAB and Haematoxylin stain. Magnification is at 40X.

This product is suitable for in-vitro studies under the RESEARCH USE ONLY [RUO] licence. This product must not be used as for diagnostic or other medical purposes.  
St John's Laboratory Ltd, Knowledge Dock Business Centre, University Way, London, E16 2RD | Tel: 0208 223 3081