

## Anti-SHISA9 isoform X2 antibody (300-400) (STJ500558)

STJ500558

### GENERAL INFORMATION

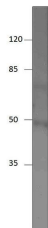
<b>Product Type</b>	Primary antibodies
<b>Short Description</b>	Rabbit polyclonal antibody anti-SHISA9 isoform X2 (300-400) is suitable for use in ELISA and Western Blot research applications.
<b>Applications</b>	ELISA, WB
<b>Host/Source</b>	Rabbit
<b>Reactivity</b>	Human, Monkey, Mouse

### PRODUCT PROPERTIES

<b>Clonality</b>	Polyclonal
<b>Clone ID</b>	
<b>Concentration</b>	0.64-0.72 µg/µl
<b>Conjugation</b>	Unconjugated
<b>Purification</b>	Affinity Purified
<b>Dilution Range</b>	WB: 1:500 DB: 1:10, 000 ELISA: 1:10, 000 IP: 1:200
<b>Formulation</b>	
<b>Isotype</b>	IgG
<b>Storage Instruction</b>	Store at -20°C for long term storage. Avoid freeze-thaw cycles.

### TARGET INFORMATION

<b>Gene ID</b>	
<b>Gene Symbol</b>	
<b>Uniprot ID</b>	
<b>Immunogen</b>	Synthetic peptide taken within amino acid region 300-400 on rat CKAMP44A/B protein.
<b>Immunogen Region</b>	300-400
<b>Specificity</b>	
<b>Immunogen Sequence</b>	



Western blot with Anti-SHISA9 isoform X2 Antibody (STJ500558) of rat lung at 1:250 antibody dilution in buffer for 1 hour at room temperature, from a 10% SDS gel.