

Anti-SHISA9 antibody (250-300) (STJ500555)

STJ500555

GENERAL INFORMATION

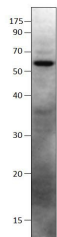
Product Type	Primary antibodies
Short Description	Rabbit polyclonal antibody anti-SHISA9 (250-300) is suitable for use in ELISA and Western Blot research applications.
Applications	ELISA, WB
Host/Source	Rabbit
Reactivity	Human, Monkey, Mouse

PRODUCT PROPERTIES

Clonality	Polyclonal
Clone ID	
Concentration	0.64-0.72 µg/µl
Conjugation	Unconjugated
Purification	Affinity Purified
Dilution Range	WB: 1:500 DB: 1:10, 000 ELISA: 1:10, 000 IP: 1:200
Formulation	
Isotype	IgG
Storage Instruction	Store at -20°C for long term storage. Avoid freeze-thaw cycles.

TARGET INFORMATION

Gene ID	72555
Gene Symbol	Shisa9
Uniprot ID	SHSA9_MOUSE
Immunogen	Synthetic peptide taken within amino acid region 250-300 on CKAMP44a protein.
Immunogen Region	250-300
Specificity	
Immunogen Sequence	



Western blot with Anti-SHISA9 Antibody (STJ500555) with peptide on at 1:500 dilution in buffer.