

Anti-CHERP antibody (846-913) (STJ500534)

STJ500534

GENERAL INFORMATION

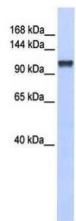
Product Type	Primary antibodies
Short Description	Rabbit polyclonal antibody anti-CHERP (846-913) is suitable for use in Confocal Microscopy, ELISA, Immunocytochemistry, Immunofluorescence, Immunohistochemistry and Western Blot research applications.
Applications	CM, ELISA, ICC, IF, IHC, WB
Host/Source	Rabbit
Reactivity	Human, Monkey, Mouse, Rat

PRODUCT PROPERTIES

Clonality	Polyclonal
Clone ID	
Concentration	0.7 µg/µl
Conjugation	Unconjugated
Purification	Affinity Purified
Dilution Range	WB: 1:500 IP: 1:200 IHC: 1:200 ICC: 1:200 IF: 1:200 CFM: 1:200
Formulation	
Isotype	IgG
Storage Instruction	Store at -20°C for long term storage. Avoid freeze-thaw cycles.

TARGET INFORMATION

Gene ID	10523
Gene Symbol	CHERP
Uniprot ID	CHERP_HUMAN
Immunogen	Synthetic peptide corresponding to a region within internal sequence amino acids 846-913 of human CHERP.
Immunogen Region	846-913
Specificity	
Immunogen Sequence	



Western blot with Anti-CHERP Antibody (STJ500534) at 1 µg/ml (in 5% skim milk / PBS buffer) + 293T cell lysate at 10 µg.