

## Anti-CHN2 antibody (1-100) (STJ500527)

STJ500527

### GENERAL INFORMATION

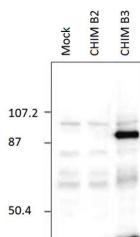
|                          |   |
|--------------------------|---|
| <b>Product Type</b>      | Primary antibodies  |
| <b>Short Description</b> | Rabbit polyclonal antibody anti-CHN2 (1-100) is suitable for use in ELISA and Western Blot research applications. |
| <b>Applications</b>      | ELISA, WB   |
| <b>Host/Source</b>       | Rabbit  |
| <b>Reactivity</b>        | Human, Mouse, Rat   |

### PRODUCT PROPERTIES

|                            |   |
|----------------------------|---|
| <b>Clonality</b>           | Polyclonal  |
| <b>Clone ID</b>            |   |
| <b>Concentration</b>       | 0.68-0.71 µg/µl   |
| <b>Conjugation</b>         | Unconjugated  |
| <b>Purification</b>        | Affinity Purified   |
| <b>Dilution Range</b>      | WB: 1:500<br>DB: 1:10, 000<br>ELISA: 1:10, 000<br>IP: 1:200     |
| <b>Formulation</b>         |   |
| <b>Isotype</b>             | IgG   |
| <b>Storage Instruction</b> | Store at -20°C for long term storage. Avoid freeze-thaw cycles. |

### TARGET INFORMATION

|                           |   |
|---------------------------|---|
| <b>Gene ID</b>            | 1124  |
| <b>Gene Symbol</b>        | CHN2  |
| <b>Uniprot ID</b>         | CHIO_HUMAN  |
| <b>Immunogen</b>          | Synthetic peptide taken within amino acid region 1-100 on human beta-chimaerin isoform 3 protein. |
| <b>Immunogen Region</b>   | 1-100   |
| <b>Specificity</b>        |   |
| <b>Immunogen Sequence</b> |   |



Western blot with Anti-CHN2 Antibody (STJ500527) with peptide on at 1:500 dilution in buffer.

This product is suitable for in-vitro studies under the RESEARCH USE ONLY [RUO] licence. This product must not be used as for diagnostic or other medical purposes.  
St John's Laboratory Ltd, Knowledge Dock Business Centre, University Way, London, E16 2RD | Tel: 0208 223 3081