

Anti-CHN2 antibody (150-180) (STJ500526)

STJ500526

GENERAL INFORMATION

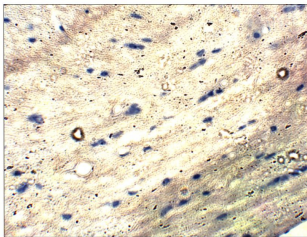
Product Type	Primary antibodies
Short Description	Rabbit polyclonal antibody anti-CHN2 (150-180) is suitable for use in ELISA, Immunohistochemistry, Immunoprecipitation and Western Blot research applications.
Applications	ELISA, IHC, IP, WB
Host/Source	Rabbit
Reactivity	Human, Mouse, Rat

PRODUCT PROPERTIES

Clonality	Polyclonal
Clone ID	
Concentration	0.68-0.71 µg/µl
Conjugation	Unconjugated
Purification	Affinity Purified
Dilution Range	WB: 1:500 ELISA: 1:10, 000 IP: 1:200 IHC: 1:100
Formulation	
Isotype	IgG
Storage Instruction	Store at -20°C for long term storage. Avoid freeze-thaw cycles.

TARGET INFORMATION

Gene ID	1124
Gene Symbol	CHN2
Uniprot ID	CHIO_HUMAN
Immunogen	Synthetic peptide taken within amino acid region 150-180 on beta 2-chimaerin protein.
Immunogen Region	150-180
Specificity	
Immunogen Sequence	



Immunohistochemistry of rat tissue with Anti-CHN2 primary antibody (STJ500526) at 1:100 dilution in Buffer. Section was treated with DAB and Haematoxylin stain. Magnification is at 40X.