

Anti-CFL1 antibody (120-166) (STJ500501)

STJ500501

GENERAL INFORMATION

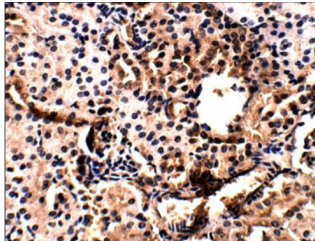
Product Type	Primary antibodies
Short Description	Rabbit polyclonal antibody anti-CFL1 (120-166) is suitable for use in Confocal Microscopy, ELISA, Immunocytochemistry, Immunofluorescence, Immunohistochemistry, Immunoprecipitation and Western Blot research applications.
Applications	CM, ELISA, ICC, IF, IHC, IP, WB
Host/Source	Rabbit
Reactivity	Human, Mouse, Rat

PRODUCT PROPERTIES

Clonality	Polyclonal
Clone ID	
Concentration	0.55-0.75 µg/µl
Conjugation	Unconjugated
Purification	Affinity Purified
Dilution Range	WB: 1:500 DB: 1:10, 000 ELISA: 1:10, 000 IHC: 1:50 ICC: 1:50 IF: 1:50
Formulation	
Isotype	IgG
Storage Instruction	Store at -20°C for long term storage. Avoid freeze-thaw cycles.

TARGET INFORMATION

Gene ID	1072
Gene Symbol	CFL1
Uniprot ID	COF1_HUMAN
Immunogen	Synthetic peptide taken within amino acid region 120-170 on human Cofilin protein.
Immunogen Region	120-166
Specificity	
Immunogen Sequence	



Immunohistochemistry of mouse kidney with Anti-CFL1 primary antibody (STJ500501) at 1:100 dilution in Buffer. Magnification is at 40X.