

## Anti-CD68 antibody (240-290) (STJ500480)

STJ500480

### GENERAL INFORMATION

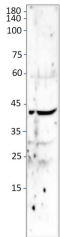
<b>Product Type</b>	Primary antibodies
<b>Short Description</b>	Rabbit polyclonal antibody anti-CD68 (240-290) is suitable for use in ELISA, Immunoprecipitation and Western Blot research applications.
<b>Applications</b>	ELISA, IP, WB
<b>Host/Source</b>	Rabbit
<b>Reactivity</b>	Human, Mouse, Rat

### PRODUCT PROPERTIES

<b>Clonality</b>	Polyclonal
<b>Clone ID</b>	
<b>Concentration</b>	0.5-1.5 µg/µl
<b>Conjugation</b>	Unconjugated
<b>Purification</b>	Affinity Purified
<b>Dilution Range</b>	WB: 1:2, 500-1:5, 000 ELISA: 1:50, 000 IP: 1:200
<b>Formulation</b>	
<b>Isotype</b>	IgG
<b>Storage Instruction</b>	Store at -20°C for long term storage. Avoid freeze-thaw cycles.

### TARGET INFORMATION

<b>Gene ID</b>	12514
<b>Gene Symbol</b>	Cd68
<b>Uniprot ID</b>	CD68_MOUSE
<b>Immunogen</b>	Synthetic peptide taken within amino acid region 240-290 on mouse CD68/Macrosialin protein.
<b>Immunogen Region</b>	240-290
<b>Specificity</b>	
<b>Immunogen Sequence</b>	



Western blot with Anti-CD68 Antibody (STJ500480) of mouse liver at 1:500 dilution in buffer.

This product is suitable for in-vitro studies under the RESEARCH USE ONLY [RUO] licence. This product must not be used as for diagnostic or other medical purposes.  
St John's Laboratory Ltd, Knowledge Dock Business Centre, University Way, London, E16 2RD | Tel: 0208 223 3081