

## Anti-CD4 antibody (437-458) (STJ500469)

STJ500469

### GENERAL INFORMATION

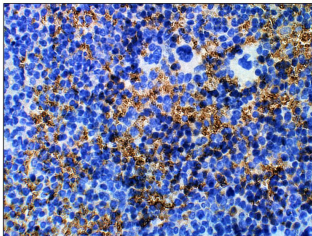
<b>Product Type</b>	Primary antibodies
<b>Short Description</b>	Rabbit polyclonal antibody anti-CD4 (437-458) is suitable for use in ELISA, Immunohistochemistry, Immunoprecipitation and Western Blot research applications.
<b>Applications</b>	ELISA, IHC, IP, WB
<b>Host/Source</b>	Rabbit
<b>Reactivity</b>	Human, Monkey, Mouse, Rat

### PRODUCT PROPERTIES

<b>Clonality</b>	Polyclonal
<b>Clone ID</b>	
<b>Concentration</b>	0.55-0.75 µg/µl
<b>Conjugation</b>	Unconjugated
<b>Purification</b>	Affinity Purified
<b>Dilution Range</b>	WB: 1:500 DB: 1:10, 000 ELISA: 1:10, 000 IP: 1:150 IHC: 1:50-1:150
<b>Formulation</b>	
<b>Isotype</b>	IgG
<b>Storage</b>	Store at -20°C for long term storage. Avoid freeze-thaw cycles.
<b>Instruction</b>	

### TARGET INFORMATION

<b>Gene ID</b>	920
<b>Gene Symbol</b>	CD4
<b>Uniprot ID</b>	CD4_HUMAN
<b>Immunogen</b>	437-458
<b>Immunogen Region</b>	437-458
<b>Specificity</b>	
<b>Immunogen Sequence</b>	



Immunohistochemistry of mouse spleen with Anti-CD4 primary antibody (STJ500469) at 1:50 dilution in Buffer. Section was treated with DAB and Haematoxylin stain. Magnification is at 40x.