

Anti-CD36 antibody (STJ500463)

STJ500463

GENERAL INFORMATION

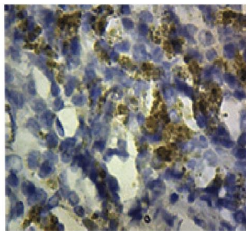
Product Type	Primary antibodies
Short Description	Rabbit polyclonal antibody anti-CD36 is suitable for use in Confocal Microscopy, ELISA, Immunocytochemistry, Immunofluorescence, Immunohistochemistry and Western Blot research applications.
Applications	CM, ELISA, ICC, IF, IHC, WB
Host/Source	Rabbit
Reactivity	Human

PRODUCT PROPERTIES

Clonality	Polyclonal
Clone ID	
Concentration	0.64-0.72 µg/µl
Conjugation	Unconjugated
Purification	Affinity Purified
Dilution Range	WB: 1:500 DB: 1:10, 000 ELISA: 1:10, 000
Formulation	
Isotype	IgG
Storage Instruction	Store at -20°C for long term storage. Avoid freeze-thaw cycles.

TARGET INFORMATION

Gene ID	948
Gene Symbol	CD36
Uniprot ID	CD36_HUMAN
Immunogen	Synthetic peptide corresponding to unique amino acid sequence on human CD36 protein.
Immunogen Region	
Immunogen Specificity	
Immunogen Sequence	



Immunohistochemistry with Anti-CD36 Antibody (STJ500463) at 1:200 dilution in Buffer. Counterstained with haematoxylin.