

## Anti-CD300LF antibody (230-290) (STJ500460)

STJ500460

### GENERAL INFORMATION

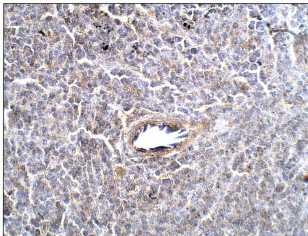
<b>Product Type</b>	Primary antibodies
<b>Short Description</b>	Rabbit polyclonal antibody anti-CD300LF (230-290) is suitable for use in ELISA, Immunohistochemistry, Immunoprecipitation and Western Blot research applications.
<b>Applications</b>	ELISA, IHC, IP, WB
<b>Host/Source</b>	Rabbit
<b>Reactivity</b>	Human, Monkey

### PRODUCT PROPERTIES

<b>Clonality</b>	Polyclonal
<b>Clone ID</b>	
<b>Concentration</b>	0.5-1.5 µg/µl
<b>Conjugation</b>	Unconjugated
<b>Purification</b>	Affinity Purified
<b>Dilution Range</b>	WB: 1:500 ELISA: 1:10, 000 IP: 1:200 IHC: 1:50-1:150 ICC: 1:50-1:150
<b>Formulation</b>	
<b>Isotype</b>	IgG
<b>Storage</b>	Store at -20°C for long term storage. Avoid freeze-thaw cycles.
<b>Instruction</b>	

### TARGET INFORMATION

<b>Gene ID</b>	146722
<b>Gene Symbol</b>	CD300LF
<b>Uniprot ID</b>	CLM1_HUMAN
<b>Immunogen</b>	Synthetic peptide taken within amino acid region 230-290 on human CMRF35-like molecule 1/CD300LF.
<b>Immunogen Region</b>	230-290
<b>Specificity</b>	
<b>Immunogen Sequence</b>	



Immunohistochemistry with Anti-CD300LF Antibody (STJ500460) at 1:100 dilution in Buffer. DAB (brown) staining and Haematoxylin QS (blue) counterstain. 40X magnification. FFPE section.

This product is suitable for in-vitro studies under the RESEARCH USE ONLY [RUO] licence. This product must not be used as for diagnostic or other medical purposes.  
St John's Laboratory Ltd, Knowledge Dock Business Centre, University Way, London, E16 2RD | Tel: 0208 223 3081