

Anti-CD3E antibody (STJ500450)

STJ500450

GENERAL INFORMATION

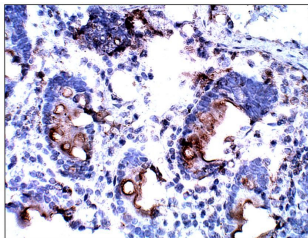
Product Type	Primary antibodies
Short Description	Rabbit polyclonal antibody anti-CD3E is suitable for use in ELISA, Immunohistochemistry, Immunoprecipitation and Western Blot research applications.
Applications	ELISA, IHC, IP, WB
Host/Source	Rabbit
Reactivity	Human, Monkey, Mouse, Rat

PRODUCT PROPERTIES

Clonality	Polyclonal
Clone ID	
Concentration	0.60-0.68 µg/µl
Conjugation	Unconjugated
Purification	Affinity Purified
Dilution Range	WB: 1:500-1:1,000 DB: 1:2,000 ELISA: 1:2,000 IP: 1:200 IHC: 1:50-1:100
Formulation	
Isotype	IgG
Storage	Store at -20°C for long term storage. Avoid freeze-thaw cycles.
Instruction	

TARGET INFORMATION

Gene ID	916
Gene Symbol	CD3E
Uniprot ID	CD3E_HUMAN
Immunogen	Extreme C-epitope synthetic peptide corresponding to unique amino acid sequence on CD3 epsilon protein.
Immunogen Region	
Specificity	
Immunogen Sequence	



Immunohistochemistry of baboon spleen with Anti-CD3E primary antibody (STJ500450) at 1:50 dilution in Buffer. Section was treated with DAB and Haematoxylin stain. Magnification is at 40X.