

Anti-CR2 antibody (650-700) (STJ500441)

STJ500441

GENERAL INFORMATION

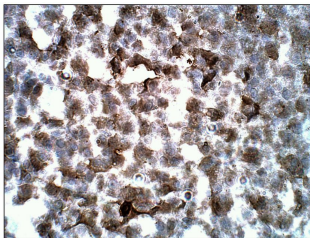
Product Type	Primary antibodies
Short Description	Rabbit polyclonal antibody anti-CR2 (650-700) is suitable for use in ELISA, Immunohistochemistry, Immunoprecipitation and Western Blot research applications.
Applications	ELISA, IHC, IP, WB
Host/Source	Rabbit
Reactivity	Human, Mouse, Rat

PRODUCT PROPERTIES

Clonality	Polyclonal
Clone ID	
Concentration	0.55-0.75 µg/µl
Conjugation	Unconjugated
Purification	Affinity Purified
Dilution Range	WB: 1:500 DB: 1:10, 000 ELISA: 1:10, 000 IP: 1:150 IHC: 1:50-1:150
Formulation	
Isotype	IgG
Storage	Store at -20°C for long term storage. Avoid freeze-thaw cycles.
Instruction	

TARGET INFORMATION

Gene ID	1380
Gene Symbol	CR2
Uniprot ID	CR2_HUMAN
Immunogen	Synthetic peptide taken within amino acid region 650-700 on human Complement Receptor type 2 isoform X1 protein.
Immunogen Region	650-700
Specificity	
Immunogen Sequence	



Immunohistochemistry of mouse tissue with Anti-CR2 primary antibody (STJ500441) at 1:100 dilution in Buffer. Section was treated with DAB and Haematoxylin stain. Magnification is at 40X.