

Anti-CD2 antibody (300-335) (STJ500435)

STJ500435

GENERAL INFORMATION

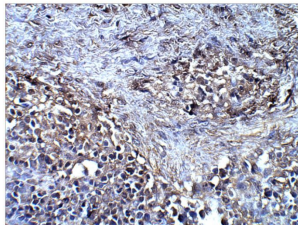
Product Type	Primary antibodies
Short Description	Rabbit polyclonal antibody anti-CD2 (300-335) is suitable for use in ELISA, Immunohistochemistry, Immunoprecipitation and Western Blot research applications.
Applications	ELISA, IHC, IP, WB
Host/Source	Rabbit
Reactivity	Human, Monkey

PRODUCT PROPERTIES

Clonality	Polyclonal
Clone ID	
Concentration	0.5 µg/µl
Conjugation	Unconjugated
Purification	Affinity Purified
Dilution Range	WB: 1:500 ELISA: 1:10, 000 IP: 1:200 IHC: 1:100 ICC: 1:100
Formulation	
Isotype	IgG
Storage	Store at -20°C for long term storage. Avoid freeze-thaw cycles.
Instruction	

TARGET INFORMATION

Gene ID	914
Gene Symbol	CD2
Uniprot ID	CD2_HUMAN
Immunogen	Synthetic peptide corresponding to amino acid region 300-335 on human T-cell surface antigen CD2 protein.
Immunogen Region	300-335
Specificity	
Immunogen Sequence	



Immunohistochemistry of baboon spleen with Anti-CD2 primary antibody (STJ500435) at 1:100 dilution in Buffer. Section was treated with DAB and Haematoxylin stain. Magnification is at 40X.