

Anti-CD19 antibody (200-250) (STJ500432)

STJ500432

GENERAL INFORMATION

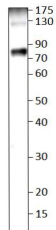
Product Type	Primary antibodies
Short Description	Rabbit polyclonal antibody anti-CD19 (200-250) is suitable for use in ELISA, Immunohistochemistry, Immunoprecipitation and Western Blot research applications.
Applications	ELISA, IHC, IP, WB
Host/Source	Rabbit
Reactivity	Human, Mouse, Rat

PRODUCT PROPERTIES

Clonality	Polyclonal
Clone ID	
Concentration	0.55-0.75 µg/µl
Conjugation	Unconjugated
Purification	Affinity Purified
Dilution Range	WB: 1:500 DB: 1:10, 000 ELISA: 1:10, 000 IP: 1:200 IHC: 1:50-1:150
Formulation	
Isotype	IgG
Storage	Store at -20°C for long term storage. Avoid freeze-thaw cycles.
Instruction	

TARGET INFORMATION

Gene ID	930
Gene Symbol	CD19
Uniprot ID	CD19_HUMAN
Immunogen	Synthetic peptide taken within amino acid region 200-250 on human CD19 protein.
Immunogen Region	200-250
Specificity	
Immunogen Sequence	



Western blot with Anti-CD19 Antibody (STJ500432) with peptide on at 1:500 dilution in buffer.