

Anti-SIGLEC1 antibody (10-60) (STJ500429)

STJ500429

GENERAL INFORMATION

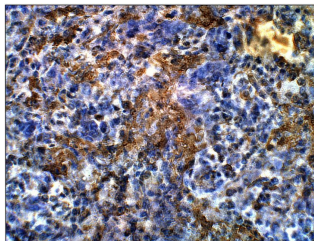
Product Type	Primary antibodies
Short Description	Rabbit polyclonal antibody anti-SIGLEC1 (10-60) is suitable for use in ELISA, Immunohistochemistry, Immunoprecipitation and Western Blot research applications.
Applications	ELISA, IHC, IP, WB
Host/Source	Rabbit
Reactivity	Human, Monkey

PRODUCT PROPERTIES

Clonality	Polyclonal
Clone ID	
Concentration	0.5 µg/µl
Conjugation	Unconjugated
Purification	Affinity Purified
Dilution Range	WB: 1:500 ELISA: 1:10,000 IP: 1:200 IHC: 1:50-1:150
Formulation	
Isotype	IgG
Storage Instruction	Store at -20°C for long term storage. Avoid freeze-thaw cycles.

TARGET INFORMATION

Gene ID	6614
Gene Symbol	SIGLEC1
Uniprot ID	SN_HUMAN
Immunogen	Synthetic peptide taken within amino acid region 10-60 on human Sialoadhesin protein.
Immunogen Region	10-60
Specificity	
Immunogen Sequence	



Immunohistochemistry of baboon lung with Anti-SIGLEC1 primary antibody (STJ500429) at 1:100 dilution in Buffer. Section was treated with DAB and Haematoxylin stain. Magnification is at 40X.