

## Anti-CD163 antibody (887-905) (STJ500424)

STJ500424

### GENERAL INFORMATION

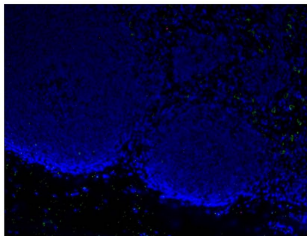
<b>Product Type</b>	Primary antibodies
<b>Short Description</b>	Rabbit polyclonal antibody anti-CD163 (887-905) is suitable for use in ELISA, Immunofluorescence, Immunoprecipitation and Western Blot research applications.
<b>Applications</b>	ELISA, IF, IP, WB
<b>Host/Source</b>	Rabbit
<b>Reactivity</b>	Human, Monkey

### PRODUCT PROPERTIES

<b>Clonality</b>	Polyclonal
<b>Clone ID</b>	
<b>Concentration</b>	0.55-0.75 µg/µl
<b>Conjugation</b>	Unconjugated
<b>Purification</b>	Affinity Purified
<b>Dilution Range</b>	WB: 1:500 DB: 1:10, 000 ELISA: 1:10, 000 IP: 1:150 IF: 1:100
<b>Formulation</b>	
<b>Isotype</b>	IgG
<b>Storage</b>	Store at -20°C for long term storage. Avoid freeze-thaw cycles.
<b>Instruction</b>	

### TARGET INFORMATION

<b>Gene ID</b>	
<b>Gene Symbol</b>	
<b>Uniprot ID</b>	
<b>Immunogen</b>	Synthetic peptide taken within amino acid region 887-905 on human CD163 protein.
<b>Immunogen Region</b>	887-905
<b>Specificity</b>	
<b>Immunogen Sequence</b>	



Anti-CD163 Antibody (STJ500424): Rhesus macaque Mesenteric Lymph node- CD163. Primary Antibody: STJ500424, 1:100 dilution. Antigen retrieval reagents: Vector, high pH H3301 and low pH H3300 Secondary Antibody: goat anti-rabbit IgG (H+L) Alexa 488 A11008 (1:1000 dilution). 20X magnification.

This product is suitable for in-vitro studies under the RESEARCH USE ONLY [RUO] licence. This product must not be used as for diagnostic or other medical purposes.  
St John's Laboratory Ltd, Knowledge Dock Business Centre, University Way, London, E16 2RD | Tel: 0208 223 3081