

Anti-CACNB2 antibody (500-600) (STJ500387)

STJ500387

GENERAL INFORMATION

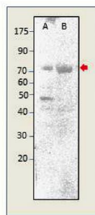
Product Type	Primary antibodies
Short Description	Rabbit polyclonal antibody anti-CACNB2 (500-600) is suitable for use in ELISA, Immunoprecipitation and Western Blot research applications.
Applications	ELISA, IP, WB
Host/Source	Rabbit
Reactivity	Human, Mouse, Rat

PRODUCT PROPERTIES

Clonality	Polyclonal
Clone ID	
Concentration	0.6 µg/µl
Conjugation	Unconjugated
Purification	Affinity Purified
Dilution Range	WB: 1:500 DB: 1:10, 000 ELISA: 1:10, 000 IP: 1:200
Formulation	
Isotype	IgG
Storage Instruction	Store at -20°C for long term storage. Avoid freeze-thaw cycles.

TARGET INFORMATION

Gene ID	116600
Gene Symbol	Cacnb2
Uniprot ID	CACB2_RAT
Immunogen	Synthetic peptide taken within amino acid region 500-600 on rat voltage-dependent L-type calcium channel subunit beta-2 protein
Immunogen Region	500-600
Specificity	
Immunogen Sequence	



Western blot with Anti-CACNB2 Antibody (STJ500387) on ear cells (A) and peptide at 1:500 dilution in buffer.

This product is suitable for in-vitro studies under the RESEARCH USE ONLY [RUO] licence. This product must not be used as for diagnostic or other medical purposes.
St John's Laboratory Ltd, Knowledge Dock Business Centre, University Way, London, E16 2RD | Tel: 0208 223 3081