

Anti-LGALS3 antibody (150-250) (STJ500376)

STJ500376

GENERAL INFORMATION

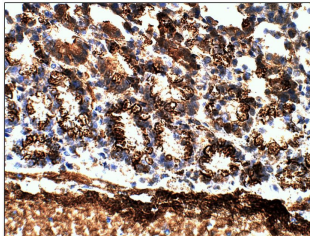
Product Type	Primary antibodies
Short Description	Rabbit polyclonal antibody anti-LGALS3 (150-250) is suitable for use in ELISA, Immunohistochemistry, Immunoprecipitation and Western Blot research applications.
Applications	ELISA, IHC, IP, WB
Host/Source	Rabbit
Reactivity	Human, Mouse, Rat

PRODUCT PROPERTIES

Clonality	Polyclonal
Clone ID	
Concentration	0.55-0.75 µg/µl
Conjugation	Unconjugated
Purification	Affinity Purified
Dilution Range	WB: 1:500 DB: 1:10, 000 ELISA: 1:10, 000 IP: 1:200 IHC: 1:50-1:150
Formulation	
Isotype	IgG
Storage	Store at -20°C for long term storage. Avoid freeze-thaw cycles.
Instruction	

TARGET INFORMATION

Gene ID	3958
Gene Symbol	LGALS3
Uniprot ID	LEG3_HUMAN
Immunogen	C-epitope synthetic peptide taken within amino acid sequences 150-250 on human Galectin 3 protein.
Immunogen Region	150-250
Specificity	
Immunogen Sequence	



Immunohistochemistry of mouse Colon with Anti-LGALS3 primary antibody (STJ500376) at 1:50 dilution in Buffer. Section was treated with DAB and Haematoxylin stain.