

## Anti-CAMK2G antibody (400-455) (STJ500361)

STJ500361

### GENERAL INFORMATION

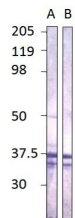
<b>Product Type</b>	Primary antibodies
<b>Short Description</b>	Rabbit polyclonal antibody anti-CAMK2G (400-455) is suitable for use in Confocal Microscopy, Dot Blot, ELISA, Immunofluorescence, Immunohistochemistry, Immunoprecipitation and Western Blot research applications.
<b>Applications</b>	CM, DB, ELISA, IF, IHC, IP, WB
<b>Host/Source</b>	Rabbit
<b>Reactivity</b>	Human, Mouse

### PRODUCT PROPERTIES

<b>Clonality</b>	Polyclonal
<b>Clone ID</b>	
<b>Concentration</b>	0.8 µg/µl
<b>Conjugation</b>	Unconjugated
<b>Purification</b>	Affinity Purified
<b>Dilution Range</b>	WB: 1:500 DB: 1:10, 000 ELISA: 1:10, 000 IP: 1:200 IHC: 1:200 ICC: 1:200 IF: 1:200 CFM: 1:200
<b>Formulation</b>	
<b>Isotype</b>	IgG
<b>Storage</b>	Store at -20°C for long term storage. Avoid freeze-thaw cycles.
<b>Instruction</b>	

### TARGET INFORMATION

<b>Gene ID</b>	818
<b>Gene Symbol</b>	CAMK2G
<b>Uniprot ID</b>	KCC2G_HUMAN
<b>Immunogen</b>	Synthetic peptide taken within amino acid region 400-455 on human CAMKII gamma protein.
<b>Immunogen Region</b>	400-455
<b>Specificity</b>	This antibody is specific for the gamma isoform only. It will not cross react with the other isoforms such as alpha, beta or delta.
<b>Immunogen Sequence</b>	



Western blot with Preimmune (A) and Anti-CAMK2G Antibody (STJ500361) (B), with peptide on at 1:500 dilution in buffer.