

Anti-CALB2 antibody (1-50) (STJ500349)

STJ500349

GENERAL INFORMATION

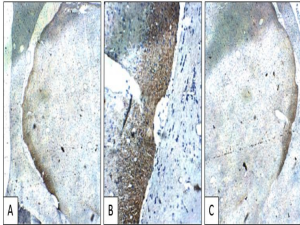
Product Type	Primary antibodies
Short Description	Rabbit polyclonal antibody anti-CALB2 (1-50) is suitable for use in Confocal Microscopy, Dot Blot, ELISA, Immunofluorescence, Immunohistochemistry, Immunoprecipitation and Western Blot research applications.
Applications	CM, DB, ELISA, IF, IHC, IP, WB
Host/Source	Rabbit
Reactivity	Human, Mouse, Rat

PRODUCT PROPERTIES

Clonality	Polyclonal
Clone ID	
Concentration	0.65 µg/µl
Conjugation	Unconjugated
Purification	Affinity Purified
Dilution Range	WB: 1:500 DB: 1:10, 000 ELISA: 1:10, 000 IP: 1:200 IHC: 1:50-1:200 ICC: 1:50-1:200 IF: 1:50-1:200 CFM: 1:50-1:200
Formulation	
Isotype	IgG
Storage	Store at -20°C for long term storage. Avoid freeze-thaw cycles.
Instruction	

TARGET INFORMATION

Gene ID	794
Gene Symbol	CALB2
Uniprot ID	CALB2_HUMAN
Immunogen	Synthetic peptide taken within amino acid region 1-50 on human Calretinin protein.
Immunogen Region	1-50
Specificity	
Immunogen Sequence	



Immunohistochemistry of rat brain with Anti-CALB2 primary antibody (STJ500349) at 1:50 dilution in Buffer. Section was treated with DAB and Haematoxylin stain. Magnification is at 40X.