

Anti-CDH17 antibody (780-832) (STJ500340)

STJ500340

GENERAL INFORMATION

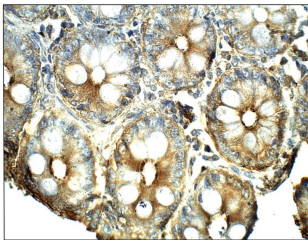
Product Type	Primary antibodies
Short Description	Rabbit polyclonal antibody anti-CDH17 (780-832) is suitable for use in ELISA, Immunoprecipitation and Western Blot research applications.
Applications	ELISA, IP, WB
Host/Source	Rabbit
Reactivity	Human, Monkey, Mouse, Rat

PRODUCT PROPERTIES

Clonality	Polyclonal
Clone ID	
Concentration	0.6 µg/µl
Conjugation	Unconjugated
Purification	Affinity Purified
Dilution Range	WB: 1:500 DB: 1:10, 000 ELISA: 1:10, 000 IP: 1:150 IHC: 1:50-1:150
Formulation	
Isotype	IgG
Storage Instruction	Store at -20°C for long term storage. Avoid freeze-thaw cycles.

TARGET INFORMATION

Gene ID	1015
Gene Symbol	CDH17
Uniprot ID	CAD17_HUMAN
Immunogen	Synthetic peptide taken within amino acid region 780-832 on human Cadherin-17 precursor protein.
Immunogen Region	780-832
Specificity	Will label all Cadherin-17 isoforms including 1, 2, and 3.
Immunogen Sequence	



Immunohistochemistry of baboon Large Intestine with Anti-CDH17 primary antibody (STJ500340) at 1:50 dilution in Buffer. Section was treated with DAB and Haematoxylin stain. Magnification is at 40X.