

Anti-CAB13 antibody (100-200) (STJ500333)

STJ500333

GENERAL INFORMATION

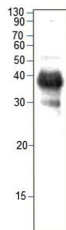
Product Type	Primary antibodies
Short Description	Rabbit polyclonal antibody anti-CAB13 (100-200) is suitable for use in Dot Blot, ELISA, Immunoprecipitation and Western Blot research applications.
Applications	DB, ELISA, IP, WB
Host/Source	Rabbit
Reactivity	Plant

PRODUCT PROPERTIES

Clonality	Polyclonal
Clone ID	
Concentration	
Conjugation	Unconjugated
Purification	Affinity Purified
Dilution Range	WB: 1:500 DB: 1:4, 000 ELISA: 1:4, 000 IP: 1:150
Formulation	
Isotype	IgG
Storage Instruction	Store at -20°C for long term storage. Avoid freeze-thaw cycles.

TARGET INFORMATION

Gene ID	
Gene Symbol	
Uniprot ID	
Immunogen	Synthetic peptide taken within amino acid region 100-200 on Solanum lycopersicum Chlorophyll a-b binding protein 13.
Immunogen Region	100-200
Specificity	
Immunogen Sequence	



Western blot with Anti-CAB13 Antibody (STJ500333) on tomato plant extract at 1:500 dilution in buffer.