

Anti-C9orf72 antibody (100-200) (STJ500330)

STJ500330

GENERAL INFORMATION

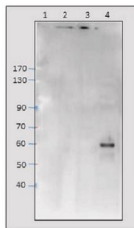
Product Type	Primary antibodies
Short Description	Rabbit polyclonal antibody anti-C9orf72 (100-200) is suitable for use in Dot Blot, ELISA, Immunoprecipitation and Western Blot research applications.
Applications	DB, ELISA, IP, WB
Host/Source	Rabbit
Reactivity	Human, Mouse, Rat

PRODUCT PROPERTIES

Clonality	Polyclonal
Clone ID	
Concentration	0.68-0.70 µg/µl
Conjugation	Unconjugated
Purification	Affinity Purified
Dilution Range	WB: 1:500 DB: 1:4, 000 ELISA: 1:4, 000 IP: 1:150
Formulation	
Isotype	IgG
Storage Instruction	Store at -20°C for long term storage. Avoid freeze-thaw cycles.

TARGET INFORMATION

Gene ID	203228
Gene Symbol	C9orf72
Uniprot ID	C1072_HUMAN
Immunogen	Synthetic peptide taken within amino acid region 100-200 on human C9orf72 isoform a protein.
Immunogen Region	100-200
Specificity	Will detect both long and short C9orf72 isoforms in human and other species.
Immunogen Sequence	



Western blot with Anti-C9orf72 Antibody (STJ500330) on mouse tissues: 1. Adrenal, 2. Pancreas, 3. Lung, 4. testis, at 1:500 dilution in buffer.