

Anti-C4A antibody (1220-1270) (STJ500327)

STJ500327

GENERAL INFORMATION

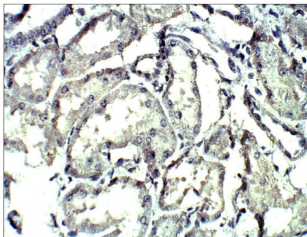
Product Type	Primary antibodies
Short Description	Rabbit polyclonal antibody anti-C4A (1220-1270) is suitable for use in ELISA, Immunohistochemistry, Immunoprecipitation and Western Blot research applications.
Applications	ELISA, IHC, IP, WB
Host/Source	Rabbit
Reactivity	Human, Monkey, Rat

PRODUCT PROPERTIES

Clonality	Polyclonal
Clone ID	
Concentration	0.6 µg/µl
Conjugation	Unconjugated
Purification	Affinity Purified
Dilution Range	WB: 1:500 ELISA: 1:10, 000 IP: 1:200 IHC: 1:100
Formulation	
Isotype	IgG
Storage Instruction	Store at -20°C for long term storage. Avoid freeze-thaw cycles.

TARGET INFORMATION

Gene ID	720/721
Gene Symbol	C4A
Uniprot ID	CO4A_HUMAN
Immunogen	Synthetic peptide taken within amino acid region 1220-1270 on human complement C4-A preprotein.
Immunogen Region	1220-1270
Specificity	
Immunogen Sequence	



Immunohistochemistry of baboon liver with Anti-C4A primary antibody (STJ500327) at 1:100 dilution in Buffer. Section was treated with DAB and Haematoxylin stain. Magnification is at 40X.