

## Anti-C1orf146 antibody (100-180) (STJ500312)

STJ500312

### GENERAL INFORMATION

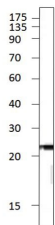
<b>Product Type</b>	Primary antibodies
<b>Short Description</b>	Rabbit polyclonal antibody anti-C1orf146 (100-180) is suitable for use in ELISA, Immunohistochemistry, Immunoprecipitation and Western Blot research applications.
<b>Applications</b>	ELISA, IHC, IP, WB
<b>Host/Source</b>	Rabbit
<b>Reactivity</b>	Human, Mouse, Rat

### PRODUCT PROPERTIES

<b>Clonality</b>	Polyclonal
<b>Clone ID</b>	
<b>Concentration</b>	0.68-0.70 µg/µl
<b>Conjugation</b>	Unconjugated
<b>Purification</b>	Affinity Purified
<b>Dilution Range</b>	WB: 1:500 DB: 1:4, 000 ELISA: 1:4, 000 IP: 1:150 IHC: 1:50-1:100
<b>Formulation</b>	
<b>Isotype</b>	IgG
<b>Storage</b>	Store at -20°C for long term storage. Avoid freeze-thaw cycles.
<b>Instruction</b>	

### TARGET INFORMATION

<b>Gene ID</b>	<a href="#">388649</a>
<b>Gene Symbol</b>	<a href="#">SPO16</a>
<b>Uniprot ID</b>	<a href="#">SPO16_HUMAN</a>
<b>Immunogen</b>	Synthetic peptide taken within amino acid region 100-180 on human C1orf146 protein.
<b>Immunogen Region</b>	100-180
<b>Specificity</b>	
<b>Immunogen Sequence</b>	



Western blot with Anti-C1orf146 Antibody (STJ500312) of rat Kidney at 1:500 dilution in buffer.