

Anti-Beta crystallin S antibody (19-37) (STJ500306)

STJ500306

GENERAL INFORMATION

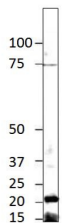
Product Type	Primary antibodies
Short Description	Rabbit polyclonal antibody anti-Beta crystallin S (19-37) is suitable for use in Confocal Microscopy, ELISA, Immunocytochemistry, Immunofluorescence, Immunohistochemistry, Immunoprecipitation and Western Blot research applications.
Applications	CM, ELISA, ICC, IF, IHC, IP, WB
Host/Source	Rabbit
Reactivity	Human, Mouse, Rat

PRODUCT PROPERTIES

Clonality	Polyclonal
Clone ID	
Concentration	0.75 µg/µl
Conjugation	Unconjugated
Purification	Affinity Purified
Dilution Range	WB: 1:500 DB: 1:10, 000 ELISA: 1:10, 000 IP: 1:200 IHC: 1:200 ICC: 1:200 IF: 1:200 CFM: 1:200
Formulation	
Isotype	IgG
Storage	Store at -20°C for long term storage. Avoid freeze-thaw cycles.
Instruction	

TARGET INFORMATION

Gene ID	12970
Gene Symbol	Crygs
Uniprot ID	CRYGS_MOUSE
Immunogen	Synthetic peptide conjugated to KLH and covalently modified, corresponding to N-terminal amino acids 19-37 of mouse Beta crystallin S protein.
Immunogen Region	19-37
Specificity	
Immunogen Sequence	



Western blot with Anti-Beta crystallin S Antibody (STJ500306) with peptide on at 1:750 dilution in buffer.