

## Anti-BST1 antibody (255-274) (STJ500285)

STJ500285

### GENERAL INFORMATION

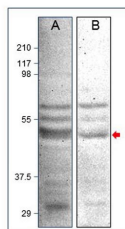
<b>Product Type</b>	Primary antibodies
<b>Short Description</b>	Rabbit polyclonal antibody anti-BST1 (255-274) is suitable for use in ELISA, Confocal Microscopy, Immunocytochemistry, Immunofluorescence, Immunohistochemistry, Immunoprecipitation and Western Blot research applications.
<b>Applications</b>	ELISA, CM, ICC, IF, IHC, IP, WB
<b>Host/Source</b>	Rabbit
<b>Reactivity</b>	Human, Mouse, Rat

### PRODUCT PROPERTIES

<b>Clonality</b>	Polyclonal
<b>Clone ID</b>	
<b>Concentration</b>	0.68 µg/µl
<b>Conjugation</b>	Unconjugated
<b>Purification</b>	Affinity Purified
<b>Dilution Range</b>	WB: 1:500 DB: 1:10, 000 ELISA: 1:10, 000 IHC: 1:200 ICC: 1:200 IF: 1:200 CFM: 1:200
<b>Formulation</b>	
<b>Isotype</b>	IgG
<b>Storage Instruction</b>	Store at -20°C for long term storage. Avoid freeze-thaw cycles.

### TARGET INFORMATION

<b>Gene ID</b>	683
<b>Gene Symbol</b>	BST1
<b>Uniprot ID</b>	BST1_HUMAN
<b>Immunogen</b>	Synthetic peptide corresponding to amino acids 255-274 of Human Bone marrow stromal cell antigen 1. Peptide was covalently modified.
<b>Immunogen Region</b>	255-274
<b>Specificity</b>	BST1-101AP does not cross react to other members of the Ras family or to other ARF members.
<b>Immunogen Sequence</b>	



Western blot with Anti-BST1 Antibody (STJ500285) of 1) Chondrocytes and 2) SKNMC cells at 1:500 dilution in buffer.