

Anti-BMPR1A antibody (460-510) (STJ500279)

STJ500279

GENERAL INFORMATION

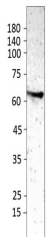
Product Type	Primary antibodies
Short Description	Rabbit polyclonal antibody anti-BMPR1A (460-510) is suitable for use in ELISA, Immunohistochemistry, Immunoprecipitation and Western Blot research applications.
Applications	ELISA, IHC, IP, WB
Host/Source	Rabbit
Reactivity	Human, Mouse, Rat

PRODUCT PROPERTIES

Clonality	Polyclonal
Clone ID	
Concentration	0.5 µg/µl
Conjugation	Unconjugated
Purification	Affinity Purified
Dilution Range	WB: 1:500 ELISA: 1:10, 000 IP: 1:150 IHC: 1:150
Formulation	
Isotype	IgG
Storage Instruction	Store at -20°C for long term storage. Avoid freeze-thaw cycles.

TARGET INFORMATION

Gene ID	657
Gene Symbol	BMPR1A
Uniprot ID	BMR1A_HUMAN
Immunogen	Synthetic peptide taken within amino acid region 460-510 on human Bone morphogenetic protein receptor type-1A.
Immunogen Region	460-510
Specificity	
Immunogen Sequence	



Western blot with Anti-BMPR1A Antibody (STJ500279) of mouse skeletal muscle at 1:250 dilution in buffer.

This product is suitable for in-vitro studies under the RESEARCH USE ONLY [RUO] licence. This product must not be used as for diagnostic or other medical purposes.
St John's Laboratory Ltd, Knowledge Dock Business Centre, University Way, London, E16 2RD | Tel: 0208 223 3081