

Anti-BMP8B antibody (160-200) (STJ500265)

STJ500265

GENERAL INFORMATION

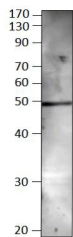
Product Type	Primary antibodies
Short Description	Rabbit polyclonal antibody anti-BMP8B (160-200) is suitable for use in ELISA and Western Blot research applications.
Applications	ELISA, WB
Host/Source	Rabbit
Reactivity	Human, Mouse, Rat

PRODUCT PROPERTIES

Clonality	Polyclonal
Clone ID	
Concentration	0.57-0.68 µg/µl
Conjugation	Unconjugated
Purification	Affinity Purified
Dilution Range	WB: 1:500-1:1, 000 DB: 1:2, 000 ELISA: 1:2, 000 IP: 1:200
Formulation	
Isotype	IgG
Storage Instruction	Store at -20°C for long term storage. Avoid freeze-thaw cycles.

TARGET INFORMATION

Gene ID	656
Gene Symbol	BMP8B
Uniprot ID	BMP8B_HUMAN
Immunogen	Synthetic peptide taken within amino acid region 160-200 on human BMP8 protein
Immunogen Region	160-200
Specificity	
Immunogen Sequence	



Western blot with Anti-BMP8B Antibody (STJ500265) with peptide on at 1:500 dilution in buffer.