

Anti-BMP1 antibody (680-730) (STJ500262)

STJ500262

GENERAL INFORMATION

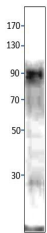
Product Type	Primary antibodies
Short Description	Rabbit polyclonal antibody anti-BMP1 (680-730) is suitable for use in ELISA, Immunoprecipitation and Western Blot research applications.
Applications	ELISA, IP, WB
Host/Source	Rabbit
Reactivity	Human, Mouse, Rat

PRODUCT PROPERTIES

Clonality	Polyclonal
Clone ID	
Concentration	0.50-0.56 µg/µl
Conjugation	Unconjugated
Purification	Affinity Purified
Dilution Range	WB: 1:500 DB: 1:2, 000 ELISA: 1:2, 000 IP: 1:200
Formulation	
Isotype	IgG
Storage Instruction	Store at -20°C for long term storage. Avoid freeze-thaw cycles.

TARGET INFORMATION

Gene ID	649
Gene Symbol	BMP1
Uniprot ID	BMP1_HUMAN
Immunogen	Synthetic peptide taken within amino acid region 680-730 on human BMP1 protein.
Immunogen Region	680-730
Specificity	
Immunogen Sequence	



Western blot with Anti-BMP1 Antibody (STJ500262) of rat with rat testis. 50-60 µg protein was resolved on SDS-PAGE. Antibody at 1:500 dilution in buffer.

This product is suitable for in-vitro studies under the RESEARCH USE ONLY [RUO] licence. This product must not be used as for diagnostic or other medical purposes.
St John's Laboratory Ltd, Knowledge Dock Business Centre, University Way, London, E16 2RD | Tel: 0208 223 3081