

## Anti-BEST4 antibody (400-500) (STJ500237)

STJ500237

### GENERAL INFORMATION

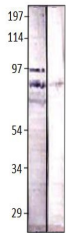
<b>Product Type</b>	Primary antibodies
<b>Short Description</b>	Rabbit polyclonal antibody anti-BEST4 (400-500) is suitable for use in ELISA, Immunoprecipitation and Western Blot research applications.
<b>Applications</b>	ELISA, IP, WB
<b>Host/Source</b>	Rabbit
<b>Reactivity</b>	Human

### PRODUCT PROPERTIES

<b>Clonality</b>	Polyclonal
<b>Clone ID</b>	
<b>Concentration</b>	0.75-1.20 µg/µl
<b>Conjugation</b>	Unconjugated
<b>Purification</b>	Affinity Purified
<b>Dilution Range</b>	WB: 1:500-1:1,000 DB: 1:2,000 ELISA: 1:2,000 IP: 1:200
<b>Formulation</b>	
<b>Isotype</b>	IgG
<b>Storage Instruction</b>	Store at -20°C for long term storage. Avoid freeze-thaw cycles.

### TARGET INFORMATION

<b>Gene ID</b>	266675
<b>Gene Symbol</b>	BEST4
<b>Uniprot ID</b>	BEST4_HUMAN
<b>Immunogen</b>	Synthetic peptide taken within amino acid region 400-500 on Bestrophin 4 protein.
<b>Immunogen Region</b>	400-500
<b>Specificity</b>	
<b>Immunogen Sequence</b>	



Western blot with Anti-BEST4 Antibody (STJ500237) with peptide on at dilution in buffer. Lane 1: Pre-immune serum, Lane 2: Affinity purified primary antibody